

Diocese of Kerry

# Religious Education

## Subject Plan



**Name of School:**

---

---

**Date:**

---

# **Contents**

**Mission Statement of the School**

**RE within the Whole School Community/Life/Day**

**RE Policy**

**Programmes taught within the school**

**The Chaplain in our School**

**The Liturgical Year Overview**

**Subject Aims and Subject Objectives**

**The RE Department Guide to the Department**

**RE Department Personnel**

**RE Subject Co-ordinator (Roles/Duties)**

**RE Subject Teachers (Roles/Duties)**

**Time Allocation and Timetabling of RE in the school – showing RE Classes and RE meeting/planning timetable**

**Curriculum Content for each year and class group**

**Textbooks and Course Materials used**

**Resources available to the RE Teachers**

**Resources which would benefit the RE Department**

**RE and ICT**

**Cross-Curricular Planning**

**Class Organisation**

**Homework Procedures**

**Assessment/Examinations in RE**

## **Effective Teaching Methodologies**

### **Record-Keeping Procedures and Templates**

- RE Department Planning Meeting**
- RE Department Review Meeting**
- Liturgical Year /RE Meeting Record**
- Liturgical Year Planning Meeting**
- Liturgical Year Review Meeting**
- Liturgical Year Times of Significance Record**
- Liturgical Year Overview Term 1, 2 and 3**
- Liturgical Year Co-curricular Activities**
- Retreat/Faith Experience Planning**
- RE related visitors into school - Plan**
- Community Outreach – Link with Parish Plan**
- Evaluation in the RE Department**
- Liturgy and Para – Liturgy Evaluation**
- Work Plan for staff in the RE Department**
- Record of Parent/Teacher/Student Meetings in the RE Department**

### **Options Structure in RE**

**Grouping of Pupils (Mixed ability, Streaming)**

**Student Access to Subject/Level**

**Planning for Students with Special Needs**

**Subject Planning for a Culturally Diverse Society**

**Provision for Health and Safety requirements**

**Reporting Procedures**

**Teacher In-Career Development**

**DES Subject Department Inspection**

### **Other Useful Templates**

- Preparing a Mass**
- Planning a Prayer Service**
- RE Term Scheme of Work**
- RE Monthly Scheme of Work**
- RE Weekly Lesson Planner**

## ***The Mission Statement of Our School***

***Religious Education in the Whole School  
Community/Life/Day***

*(Mention ethos, trustees, staff, liturgical year etc.....)*

# *Religious Education Policy*

## ***Programmes taught in the school***

*(Simply tick those which apply)*

<b>Year Group</b>	<b>Examination</b>	<b>Non Examination</b>
1 <sup>st</sup>		
2 <sup>nd</sup>		
3 <sup>rd</sup>		
4 <sup>th</sup>		
5 <sup>th</sup>		
6 <sup>th</sup>		
JCSP		
LCAP		





## *The Liturgical Year Overview*

Month	Times Marked	Group/Whole School
September		
October		
November		
December		
January		
February		
March		
April		
May		



*The Religious Education Department  
Guide to the Department*





## The RE Department Subject Co-Coordinator

Month	
Sept	
Oct	
Nov	
Dec	
Jan	
Feb	
March	
April	
May	

**Other Duties/Responsibilities:**



## The RE Department Subject Teacher

Month	
Sept	
Oct	
Nov	
Dec	
Jan	
Feb	
March	
April	
May	



## *Time Allocation to Religious Education*

Year Group	Teacher	Day and Time of Classes
<b>1<sup>st</sup></b>		
<b>2<sup>nd</sup></b>		
<b>3<sup>rd</sup></b>		
<b>4<sup>th</sup></b>		
<b>5<sup>th</sup></b>		
<b>6<sup>th</sup></b>		
<b><i>JCSP</i></b>		
<b><i>LCAP</i></b>		





**Religious Education Classes in the School 200**

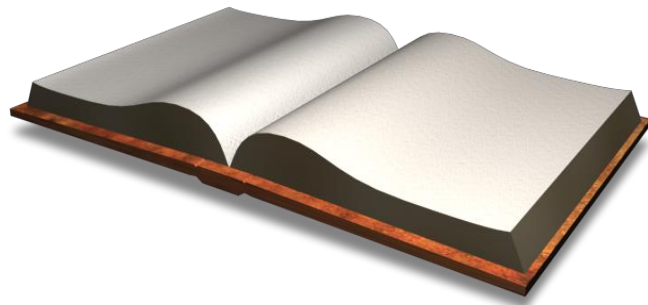
<b>Monday</b>									
<b>Tuesday</b>									
<b>Wednesday</b>									
<b>Thursday</b>									
<b>Friday</b>									

**Religious Education Planning/Meeting Times 200**

<b>Monday</b>									
<b>Tuesday</b>									
<b>Wednesday</b>									
<b>Thursday</b>									
<b>Friday</b>									



# *Curriculum Content*



*Content to be covered in  
each Year of Programme.  
Use this template for each  
year group or class group.*



## Subject Department Curricular Plans 200\_\_\_\_\_

Subject Co-ordinator:

Subject:

Year Group:

Level:

Book:

*Time Period*

*Topics/Areas to be covered*

**Sept – Autumn Midterm**

- 1.
- 2.
- 3.
- 4.
- 5.

**Midterm -Christmas**

- 1.
- 2.
- 3.
- 4.
- 5.

**Christmas- Easter**

- 1.
- 2.
- 3.
- 4.
- 5.

**Easter -Summer**

- 1.
- 2.
- 3.
- 4.
- 5.



***Textbooks and Course Materials used by  
Teachers***

Year Group	Textbooks	Other Course Materials
<b>1<sup>st</sup></b>		
<b>2<sup>nd</sup></b>		
<b>3<sup>rd</sup></b>		
<b>4<sup>th</sup></b>		
<b>5<sup>th</sup></b>		
<b>6<sup>th</sup></b>		
<b><i>JCSP</i></b>		
<b><i>LCAP</i></b>		











## *Using ICT in Religious Education Classes*

### Availability/Use of ICT Facilities:

---



---



---



---



---



---

Year Group	Example 1	Example 2
<b>1<sup>st</sup></b>		
<b>2<sup>nd</sup></b>		
<b>3<sup>rd</sup></b>		
<b>4<sup>th</sup></b>		
<b>5<sup>th</sup></b>		
<b>6<sup>th</sup></b>		
<b>JCSP</b>		
<b>LCAP</b>		

## Cross Curricular Planning

Year Group	Example 1	Example 2
<b>1<sup>st</sup></b>		
<b>2<sup>nd</sup></b>		
<b>3<sup>rd</sup></b>		
<b>4<sup>th</sup></b>		
<b>5<sup>th</sup></b>		
<b>6<sup>th</sup></b>		
<b>JCSP</b>		
<b>LCAP</b>		





## Assessments/Examinations Procedures

Year Group	Term 1	Term 2	Term 3
<b>1<sup>st</sup></b>			
<b>2<sup>nd</sup></b>			
<b>3<sup>rd</sup></b>			
<b>4<sup>th</sup></b>			
<b>5<sup>th</sup></b>			
<b>6<sup>th</sup></b>			
<b>JCSP</b>			
<b>LCAP</b>			



## Effective Teaching Methodologies Examples

Year Group	Term 1	Term 2	Term 3
<b>1<sup>st</sup></b>			
<b>2<sup>nd</sup></b>			
<b>3<sup>rd</sup></b>			
<b>4<sup>th</sup></b>			
<b>5<sup>th</sup></b>			
<b>6<sup>th</sup></b>			
<b>JCSP</b>			
<b>LCAP</b>			



# R E Department Planning Meeting

**Time of Year:** \_\_\_\_\_

**Date:** \_\_\_\_\_

**Present:**

---

---

---

---

---

---

---

**Purpose of the Meeting**

**Action Taken**

**Signed:**

**Date:**

# R E Department Review Meeting

**Time of Year:** \_\_\_\_\_

**Date:** \_\_\_\_\_

**Present:**

---

---

---

---

**Purpose of the Meeting**

**Action Taken**

**Signed:**

**Date:**

# Liturgical Year/Religion Department Meeting Record

**Names of those in attendance:**

---

---

---

---

---

**Purpose of Meeting:**

---

## Detail of Meeting

**Date:** \_\_\_\_\_

**Time:** \_\_\_\_\_

### Brief Outline

---

---

---

---

---

---

---

---

---

---

**Recorded By:**

**Signed:** \_\_\_\_\_

**Date:** \_\_\_\_\_



# Liturgical Year Planning Meeting

**Time of Year:** \_\_\_\_\_

**Date:** \_\_\_\_\_

**Present:** \_\_\_\_\_  
\_\_\_\_\_  
\_\_\_\_\_

**Purpose of the Meeting**

**Action Taken**

**Signed:**

**Date:**

# Liturgical Year Review Meeting

**Time of Year:** \_\_\_\_\_

**Date:** \_\_\_\_\_

**Present:** \_\_\_\_\_  
\_\_\_\_\_  
\_\_\_\_\_

**Purpose of the Meeting**

**Action Taken**

**Signed:**

**Date:**



# The Liturgical Year Overview – Record

## Term 1

Month/Time of significance	Group class/year/whole school/staff	Location-classroom/ Prayer room/hall	Description – prayer service, Mass Retreat
Sept			
Oct			
Nov			
Dec			

## Term 2

Month/Time of significance	Group class/year/whole school/staff	Location-classroom/Prayer room/hall	Description – prayer service, Mass Retreat
<b>Jan</b>			
<b>Feb</b>			
<b>March</b>			

## Term 3

Month/Time of significance	Group class/year/whole school/staff	Location-classroom/Prayer room/hall	Description – prayer service, Mass Retreat
<b>Mar</b>			
<b>April</b>			
<b>May</b>			

## The Liturgical Year – Co Curricular Activities

Month/time of significance	Group – Class/Year/whole School/Staff	Location – classroom/ Prayer room, Hall	Description – Prayer Service, Mass Retreat
Sept			
Oct			
Nov			
Dec			

Jan			
Feb			
Mar			
April			
May			



## Retreat/Faith Experience Planning

Group	Organising Teacher	Retreat Venue	Term/ Time of Year
First Year			
Second Year			
Third Year			
Fourth Year			
Fifth Year			
Sixth Year			

## Planning in Religion Education – Religious Education related visitors into school

Group	Organising Teacher	Organisation	Term/ time of year
First Year			
Second Year			
Third Year			
Fourth Year			
Fifth Year			
Sixth Year			

## Community Outreach – Link with Parish

Group	Organising Teacher	Visits In	Visits Out
First Year			
Second Year			
Third Year			
Fourth Year			
Fifth Year			
Sixth Year			

## Evaluation in the Religious Education Department

Year: \_\_\_\_\_ Class: \_\_\_\_\_ Date: \_\_\_\_\_

Description	Comment

## Liturgy and Para-liturgy Evaluation in the Religious Education Department

**Year:** \_\_\_\_\_ **Class:** \_\_\_\_\_ **Date:** \_\_\_\_\_

Description	Comment

**WORK TO BE COMPLETED IN RE DEPARTMENT 200\_\_**

Month	Department	Liturgy	Resources
Sept			
Oct			
Nov			
Dec			
Jan			
Feb			
March			
April			
May			

Religious Education Department

REPORT ON STUDENT/PARENT/TEACHER MEETING

**Student's Name:** \_\_\_\_\_

**Class:** \_\_\_\_\_ **Year:** \_\_\_\_\_ **Date:** \_\_\_\_\_

Meeting requested by: \_\_\_\_\_

Reason for meeting:

---

---

---

---

---

People present:

---

---

---

---

---

Issues raised: \_\_\_\_\_

---

---

---

---

---

Conclusions/Action: \_\_\_\_\_

---

---

---

---

---

---

---

---

Signed: \_\_\_\_\_ Date: \_\_\_\_\_

Additional Information:

---

---

---

---

---

---

---

---





***Options Structure:***

---

---

---

---

---

---

---

---

***Grouping of Pupils (Mixed ability, Streaming):***

---

---

---

---

---

---

---

---

---

---

***Student Access to Subject / Level:***

---

---

---

---

---

---

---

---

---

---

---

---

---

---

---

---

---

---

---

---

---

---

---

---





## Reporting Procedures in the RE Department

Within the RE Department	
To Management	
To Students	
To Parents	
Outside School	

## *Teacher In-Career Development:*

**2005/06:**

<b>Name</b>	<b>Date</b>	<b>Provider</b>	<b>Topic</b>

**2006/07:**

<b>Name</b>	<b>Date</b>	<b>Provider</b>	<b>Topic</b>

**2007/08:**

<b>Name</b>	<b>Date</b>	<b>Provider</b>	<b>Topic</b>

**2008/09:**

<b>Name</b>	<b>Date</b>	<b>Provider</b>	<b>Topic</b>

**2009/10:**

<b>Name</b>	<b>Date</b>	<b>Provider</b>	<b>Topic</b>

**2010/11:**

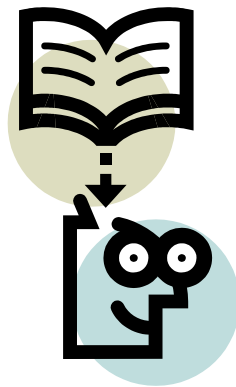
<b>Name</b>	<b>Date</b>	<b>Provider</b>	<b>Topic</b>



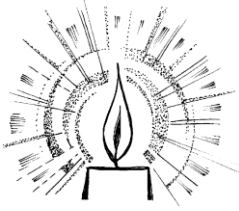
*Other*

*Useful*

*Templates*







## Preparing a Mass



**Before you begin – Mass for \_\_\_\_\_**

**Context:** Who will be present?

What events/experiences will influence the liturgy?

**Setting** Where will the liturgy be held?

**Time** When will the liturgy take place?

**Theme/Focus:**

**Clergy :**

## The Liturgy

(Please use this in planning)

**Entrance Hymn:**

**Opening Introduction:**

Penitential Prayers :

Opening Prayer :

Gloria

**Liturgy of the Word**

First Reading:

Psalm :

Second Reading :

Gospel ;

Homily Theme

Creed

Prayers of the Faithful

Liturgy of the Eucharist

Offertory

Gifts

Music

Narrator

Eucharistic Prayer

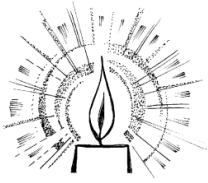
Our Father – Peace Prayer – Sign of Peace

Holy Communion Music/Hymns

Communion Reflection

Concluding Rite & Final Blessing

Closing Hymn



## Planning a Non-Eucharistic liturgy



### Before you begin

Setting

### The liturgy itself

Opening Reflection

**Word of God**

**Responding to God's Word – Prayers**

1.

2.

3.

4.

5.

6.

**Closing Reflection**

**Music to be used:**

1.

2.

3.

4.

**Religious Education Term Scheme of Work****Year:** \_\_\_\_\_**Class:** \_\_\_\_\_

Term 1	Week	Work to be completed
	1	
	2	
	3	
	4	
	5	
	6	
	7	
	8	
	9	
	10	
	11	
	12	
	13	
	14	

**Religious Education Term Scheme of Work****Year:** \_\_\_\_\_**Class:** \_\_\_\_\_

Term 2	Week	Work to be completed
	1	
	2	
	3	
	4	
	5	
	6	
	7	
	8	
	9	
	10	
	11	

**Religious Education Term Scheme of Work****Year:** \_\_\_\_\_**Class:** \_\_\_\_\_

Term 3	Week	Work to be completed
	1	
	2	
	3	
	4	
	5	
	6	
	7	

## *Religious Education Weekly Lesson Planner*

Class \_\_\_\_\_

Week beginning \_\_\_\_\_

Lesson	Class work	Homework



## *Religious Education Monthly Scheme*

Class \_\_\_\_\_

Month \_\_\_\_\_

Week	Class work	Homework
1		
2		
3		
4		









**Source: Marie Murphy (PPDA Cork & Ross)  
& School Development Planning Initiative**

